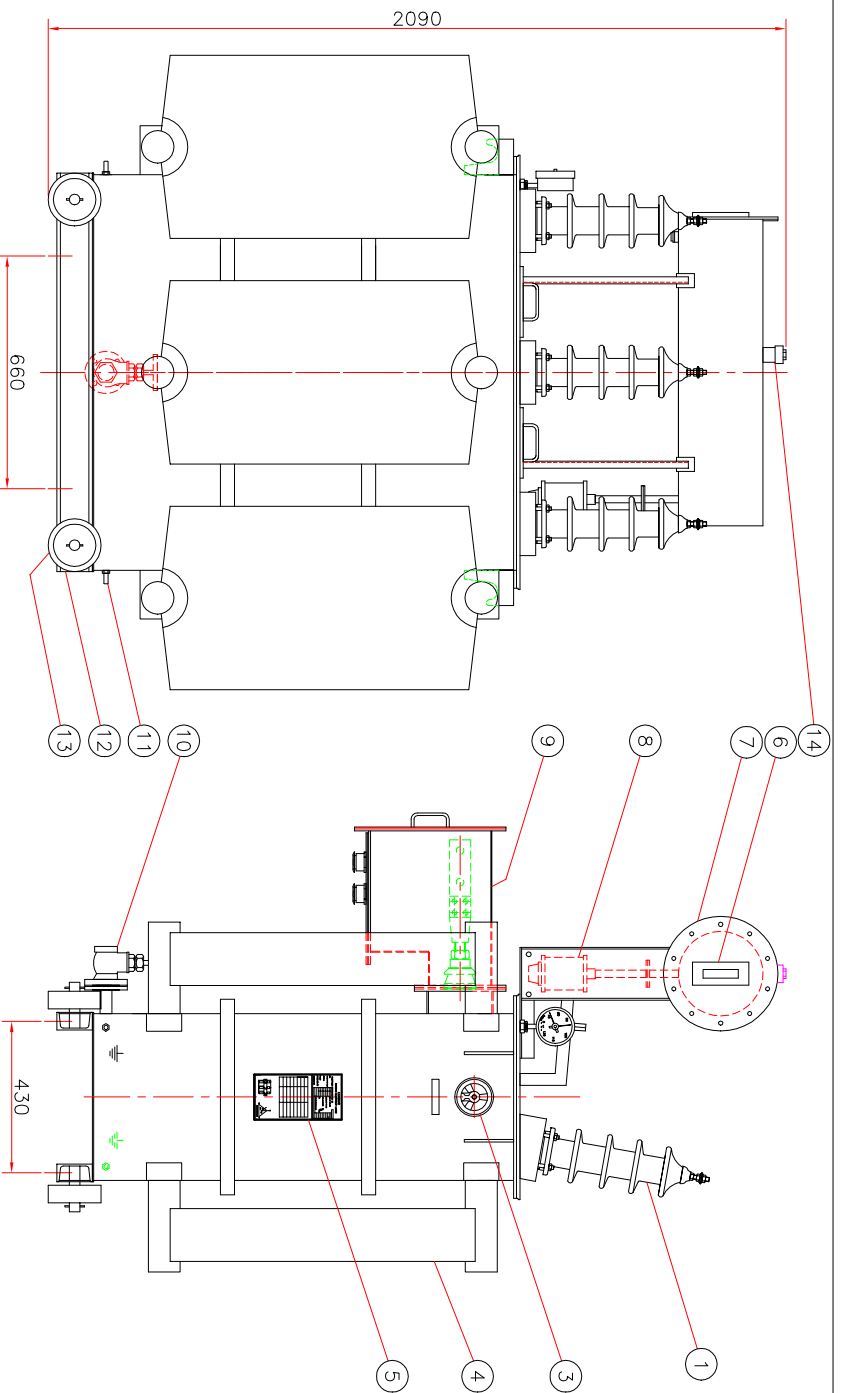


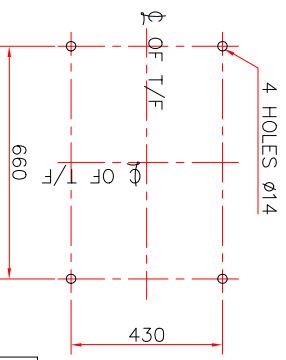
WEIGHT CHART		
SL.NO.	DESCRIPTION	WT. IN KG.
1	CORE AND WINDING	1015
2	TANK AND FITTINGS	595
3	OIL 567 LITRES	470
4	TOTAL WEIGHT	2080



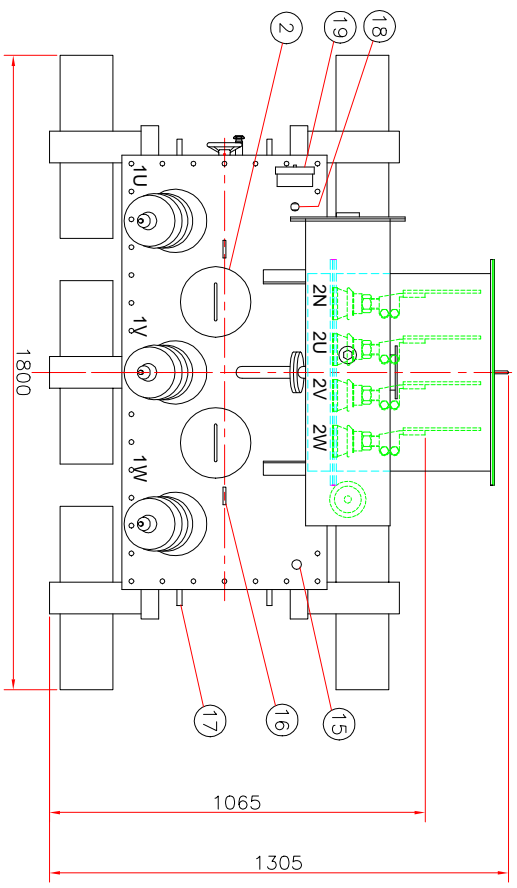
NOTES :-

1. ALL DIMENSIONS ARE IN mm.
2. TOLERANCE $\pm 10\%$ ON DIMENSIONS & WEIGHTS.

19	DIAL TYPE THERMOMETER	1 NO.
18	AIR RELEASE PLUG	1 NO.
17	LIFTING LUG	4 NOS.
16	TOP COVER LIFTING LUGS	2 NOS.
15	THERMOMETER POCKET	1 NO.
14	OIL FILLING HOLE WITH CAP	1 NO.
13	UNI-DIRECTIONAL TYPE FLAT ROLLER	4 NOS.
12	BASE CHANNEL	2 NOS.
11	EARTHING TERMINAL	2 NOS.
10	DRAIN VALVE	1 NO.
9	L.V. CABLE BOX	1 NO.
8	SILICAGEL BREATHER	1 NO.
7	CONSERVATOR WITH DRAIN PLUG	1 NO.
6	OIL LEVEL INDICATOR	1 NO.
5	RATING AND TERMINAL MARKING PLATE	1 NO.
4	COOLING RADIATOR	5 NOS.
3	OFF CIRCUIT TAPPING SWITCH	1 NO.
2	INSPECTION COVER	2 NOS.
1	H.V. BUSHING WITH ARCING HORNS	3 NOS.



FOUNDATION DETAIL



SIGN	DATE
DRN	S.D. 13.02.2007
CHKD	N.C. 13.02.2007
APPD	A.S. 13.02.2007
SCALE	1 : 15
TRANS TECH HANDELS-GMBH BREMEN, GERMANY	
GENERAL ARRANGEMENT 500 KVA, 33/0.415 KV, 3 PHASE TRANSFORMER	
DRAWING NO.	3-500/E-1/1